

NATURAL STONE

SERIES

NEW
SHADES

VOL- II



The habit of using Natural Stone

Stone has been considered as one of the building cladding material since ancient times owing to its availability in abundance from the natural source. Stone in building façade gives enough strength and durability. In the abyss of time, the natural stone is losing its popularity as dressing of stones is tedious, laborious, and time-consuming. Also, desiring strength and quality is not available at moderate rates especially in plain areas. Stone as facade material can't give freshness and flexibility to the designers.

To follow the traditional facade architecture for modern-day facades, Viva's natural stone finished aluminium composite panel is the most suitable option without harming nature. It is available in 30+ variants with lightweight, flexible, 90 degrees bendable, cost-effective, and fire retardant. The thickness varies from 3mm to 8mm for high wind pressure areas and high rise building.



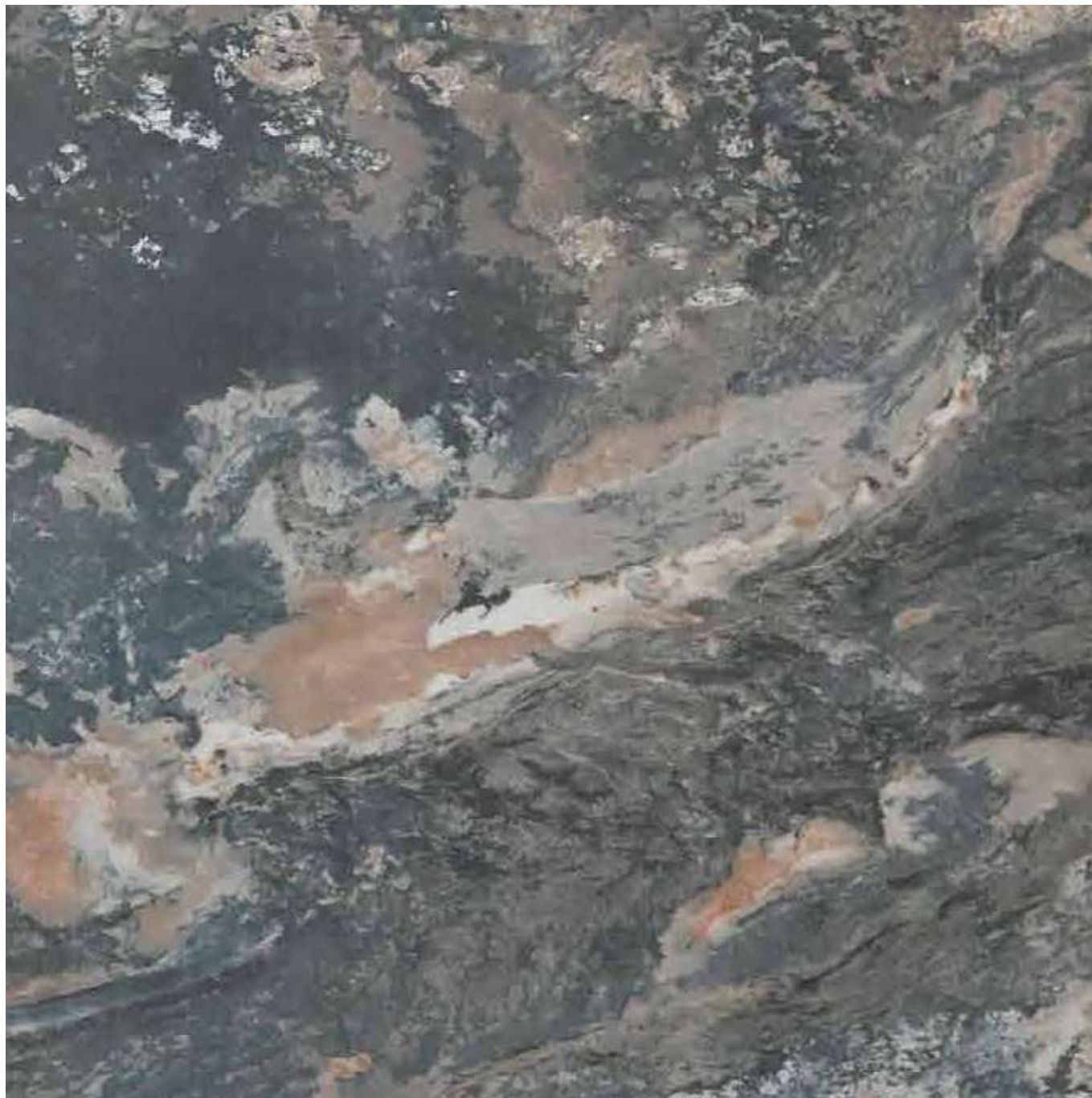


Why use Viva's Stone finished ACPs?

- Lighter than actual Stone Cladding
- Available with FR Grade: Class B, Class A2 & Class A2+
- EN 13501-1:2018, ASTM D1929-16, and NFPA 285-2019 certified FR products
- 30+ Natural Stone shades are available
- 20 years of product warranty
- Easy to install than the actual stone cladding
- Stone finished ACPs are easy to carry
- Bendable and easy to fabricate
- Easy installation on high rise building with thicknesses up to 6mm to 8mm
- Anti-Bacterial, Scratch Resistant and Dust Repellent properties

APPLICATIONS AREA





NEW
SHADE

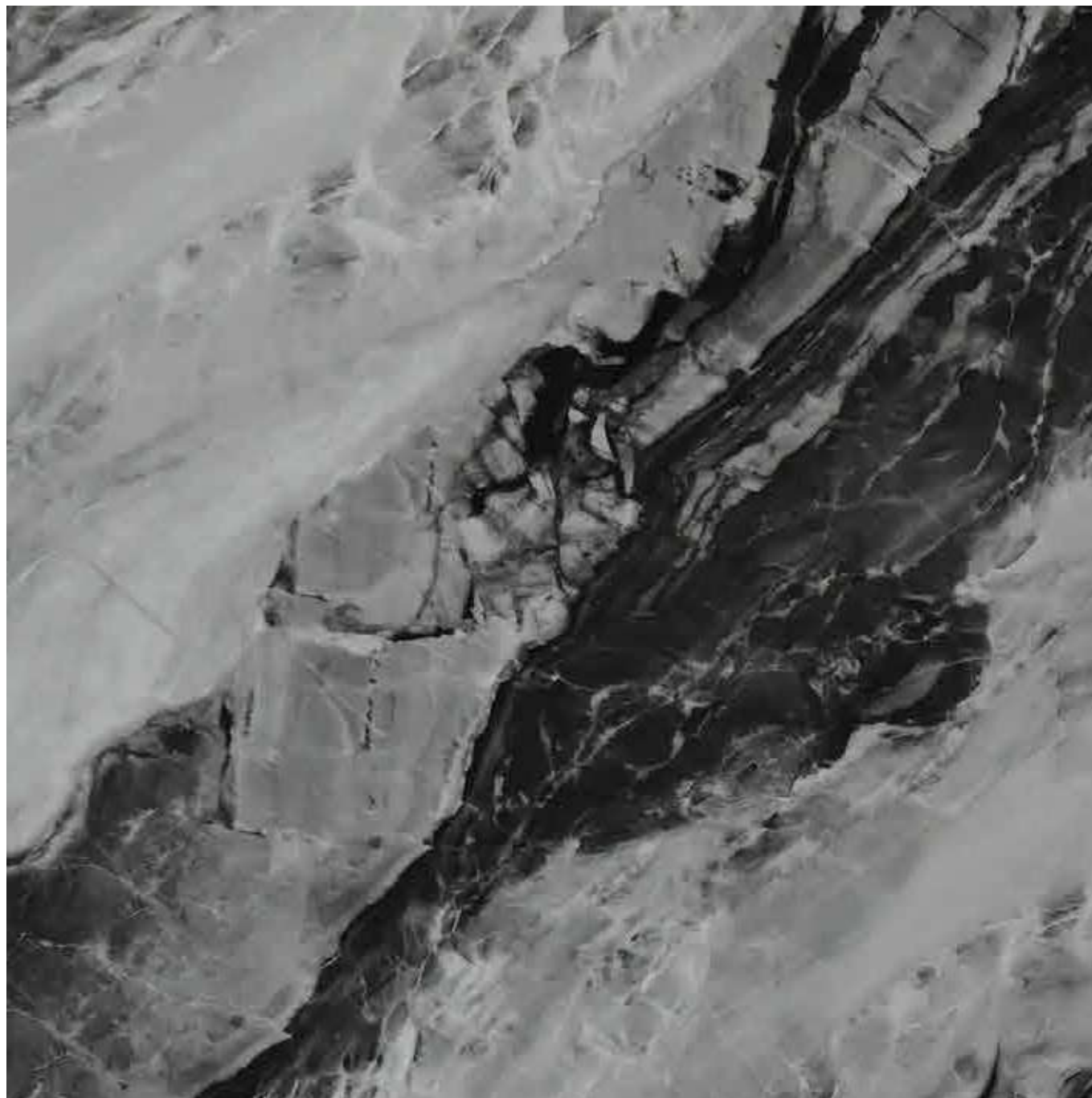
VA 9027 | Cielo Quartzite



VA 9027
Cielo Quartzite

WHITE SAND

Before the boundless expanses of grains of white sand, the sea is choppy due to the arrival of a sudden storm while, slowly, the sky turns bluish grey streaked with silver brushstrokes of grey and the golden glow of the lightnings: these are the images evoked by Cielo Quartzite. The meeting between the restlessness of continuous change in the air and the vital innate energy in the land appears to have given this extraordinary Quartzite the colours of infinity. There is a sense of the absolute, of unblemished purity across every surface created with this natural stone shade, which stands out for its dark grey, taupe, and off white tinges that can give rooms a sense of strength, calm and safety.



NEW
SHADE

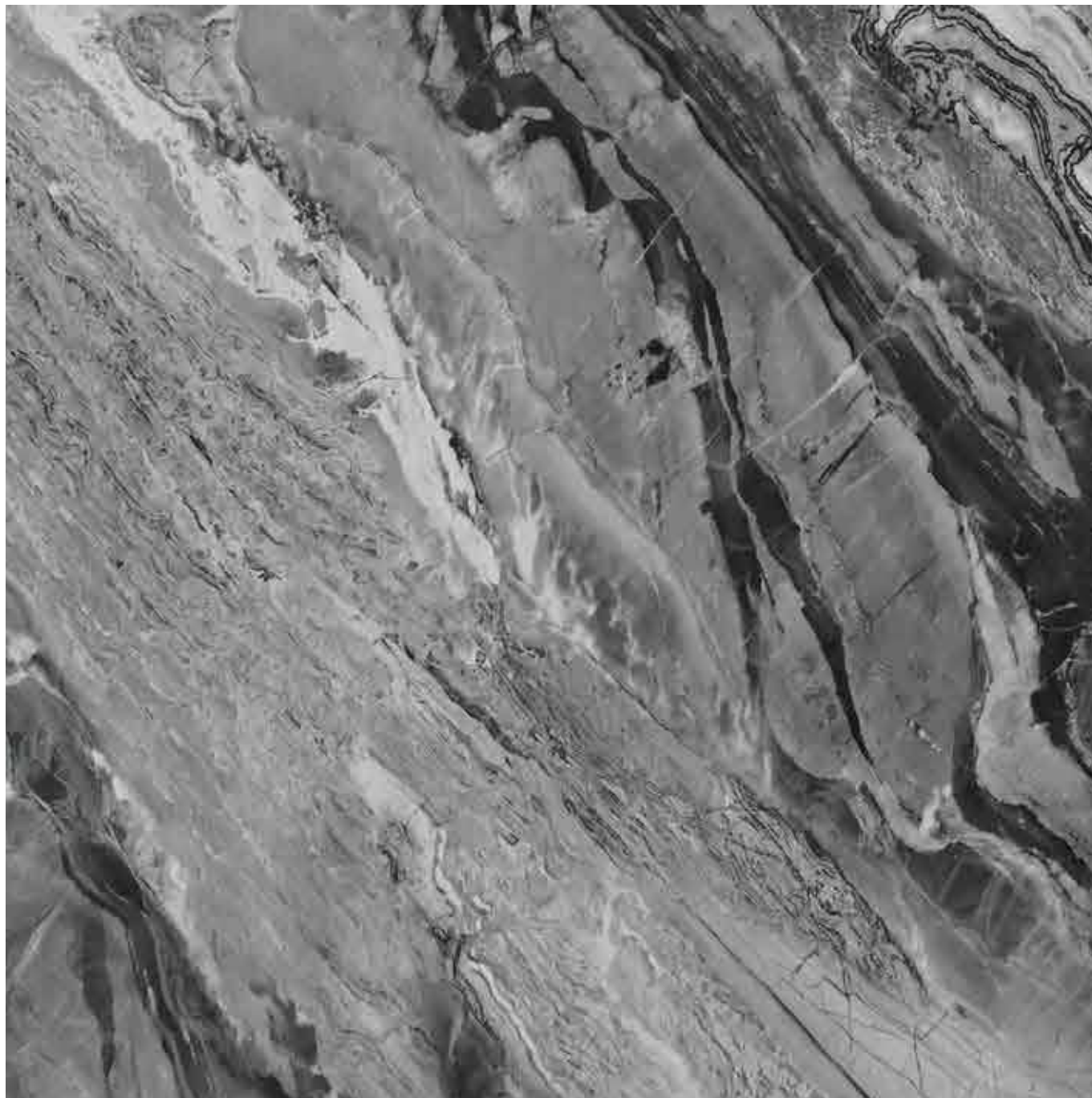
VA 9029 | Talkotile



VA 9029
Talkotile

METAMORPHIC ROCK

Grey marble is a form of metamorphic rock. It comes in a variety of colours, but the most prevalent are white and black. So the amalgamation of white and black gives various hues of grey, which can be seen under specific lighting and angles. Every angle will give you a different touch of grey. An exquisite grey shade with light and dark veins running parallelly creates a warm ambience of sophistication and modernity. It symbolizes refinement and balance and is a perfect material for creating rooms with a calm and relaxed character. The shade Talkotile has a sequence of dark grey textures that are not only beautiful but also unique.



NEW
SHADE

VA 9030 | Moon Watcher



VA 9030
Moon Watcher

LUNAR HIGHLANDS

There is no material more precious and refined than stone, with its long history, gorgeous tints, and variety of applications. Experience the Lunar Highlands of Moon Surface with the tints of Maria with this shade. The moon's ephemeral beauty and its various hues go well with the shade Moon Watcher. Using two different tones of grey together will surely brighten up your interiors.



NEW
SHADE

VA 9028 | Blue Jeans Marble



VA 9028
Blue Jeans Marble

SURFACE OF RELIEF_____

The old grunges that impart vintage look definitely evoke a sense of relief. Marble, being cultural symbol of refinement and tradition gives treat and relief to eyes. The natural colour of limestone depends on minerals that were present in it prior to crystallisation. The stone "Blue Jeans" is genuinely motivating. Its natural colour is beautiful. With shades of light blue, turquoise, grey, beige, and dark brown, Blue Jeans Marble is highly distinctive. Anything built with Blue Jeans Marble is sure to garner notice. This hue is excellent for a stunning accent because it has beautiful blue colours and a consistent texture.



VA 9031 | Bardiglio Grey

NEW
SHADE



VA 9031
Bardiglio Grey

GREYS FROM DREAM

The combination of blue and grey tones creates the colour Bardiglio Grey. A highly appealing and elegant appearance is produced by the blending of light and dark blue, as well as a light grey tone and dark grey vein structure. The colour scheme gives your ideal setting a dreamy appearance.



VA 9002
Cement



VA 9010
Akbar Brown



STONEHENGE

England

Stonehenge is a world-famous prehistoric stone monument located near the town of Salisbury in Wiltshire County, England. The Neolithic builders took around an estimated 1,500 years to erect this prehistoric monument. It is comprised of roughly 100 massive upright stones placed in a circular layout. Stonehenge megaliths include smaller bluestones and larger sarsens. The bluestones are composed of dolerite, tuff, rhyolite, or sandstone.

The combination of Viva's Cement (VA-9002) and Akbar Brown (VA-9010) will give your exterior an aesthetic appeal of natural stone like that of the Stonehenge!



VA 9001
Grey Goose



VA 9008
Grey Onyx

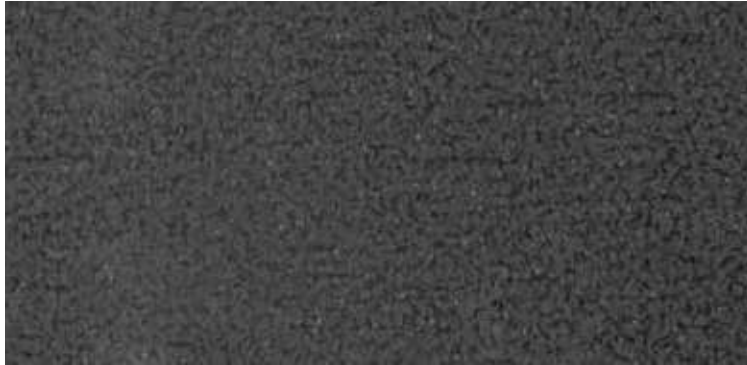
TEMPLE OF THE INSCRIPTIONS

Mexico

The Temple of the Inscriptions ranks among the most famous monuments of the Maya world and is the largest Mesoamerican stepped pyramid structure, located in the modern-day state of Chiapas, Mexico. It is known for its stunning architecture, sprawling temples, treasures, elaborately carved sarcophagus, and stucco sculpture decorating the walls.

To get the similar engraved look for your exterior, choose Viva's Grey Goose (VA-9001) and Grey Onyx (VA-9008) that are designed especially for such carved imprints.





VA 9007
Twilight Black



VA 9009
Black Panther

CLIFFS OF MOHER

Ireland

The Cliffs of Moher are sea cliffs located at the southwestern edge of the Burren region in County Clare, Ireland. Over the millions of years, the sediments were compacted into solid rock and were pushed northwards due to movements in the earth's plates. It is these sedimentary rock layers of sandstones, siltstone, mudstone and shale that make up the Cliffs of Moher today.

Viva's Twilight Black (VA-9007) and Black Panther (VA-9009) ACP will give facade a texture and color of rock, stone and mud.





VA 9018
Moon
Stone Grey



VA 9006
Blanco Tranco



LEMPUYUNG

Bali

Lempuyang Temple locally known as Pura Luhur Lempuyang is one of Bali's oldest and most highly regarded temples. The entire landscape looks very picturesque, and the gate is also known to the western world as 'The Gates of Heaven'. The gates and its temple are located in the eastern part of Bali within the highlands of Mount Lempuyang.

The ethereal beauty of this monument can be experienced with our Moon Stone Grey (VA-9018) and Blanco Tranco (VA-9006) series.



VA 9017
Sandstone



POSTOJNA CAVE

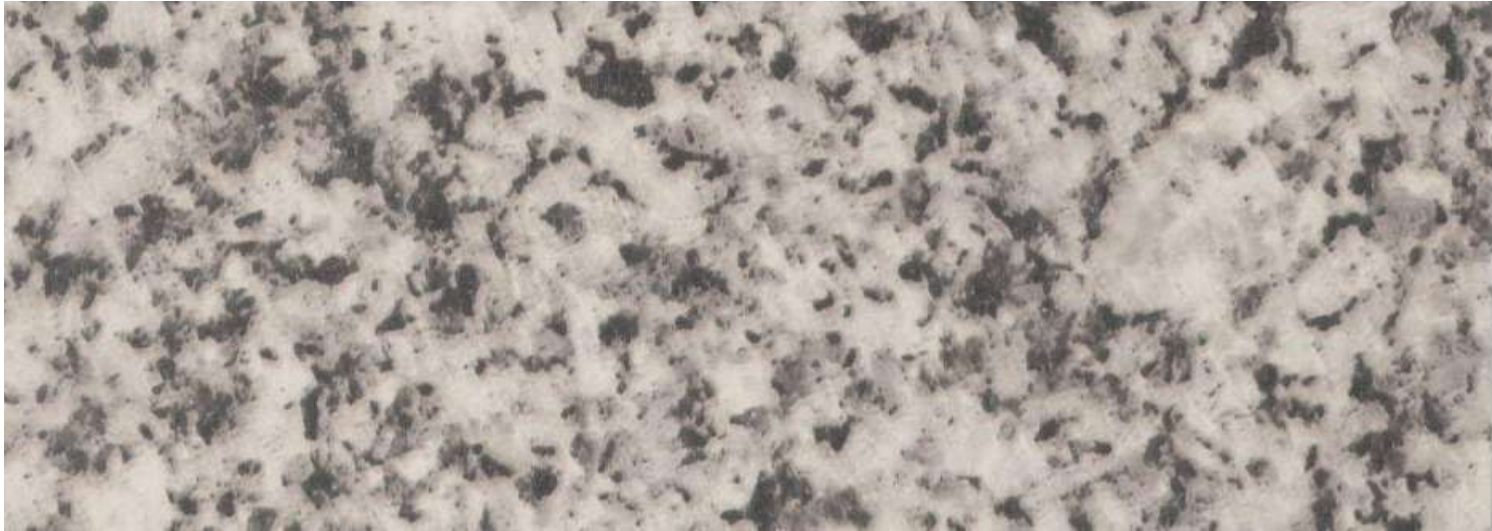
Slovenia

The jaw-dropping Postojna Cave system, located in southwestern Slovenia, is a series of caverns, halls and passages some 24km long and two million years old. It was hollowed out by the Pivka River, which enters a subterranean tunnel near the cave's entrance. It is the second-longest cave system in the country, having almost 1 million tourists annually.

Viva's Sandstone (VA-9017) and Knotty Blue (VA-9011) furnish the most captivating and magnificent design for your exterior and interior. Experience the fascinating subterranean paradise with our Natural stone series.



VA 9011
Knotty Blue



VA 9025
Azurite Beads



VA 9012
Tajmahal Stone



GGANTIJA

Xaghra, Malta

Ggantija is a megalithic temple complex from the Neolithic on the Mediterranean island of Gozo. The Ġgantija Temples are included in the UNESCO World Heritage List. The temples are built in the typical clover-leaf shape, with inner-facing blocks marking the shape. The space between the walls was then filled in with rubble.

The shade Azurite Beads (VA-9025) and Tajmahal Stone (VA-9012) mimics the appearance of stone, thus elevating the look of your building.



VA 9019
Jaipur Pink



VA 9023
Rosa Zarci

HAEDONG YONGGUNG TEMPLE

Busan, South Korea

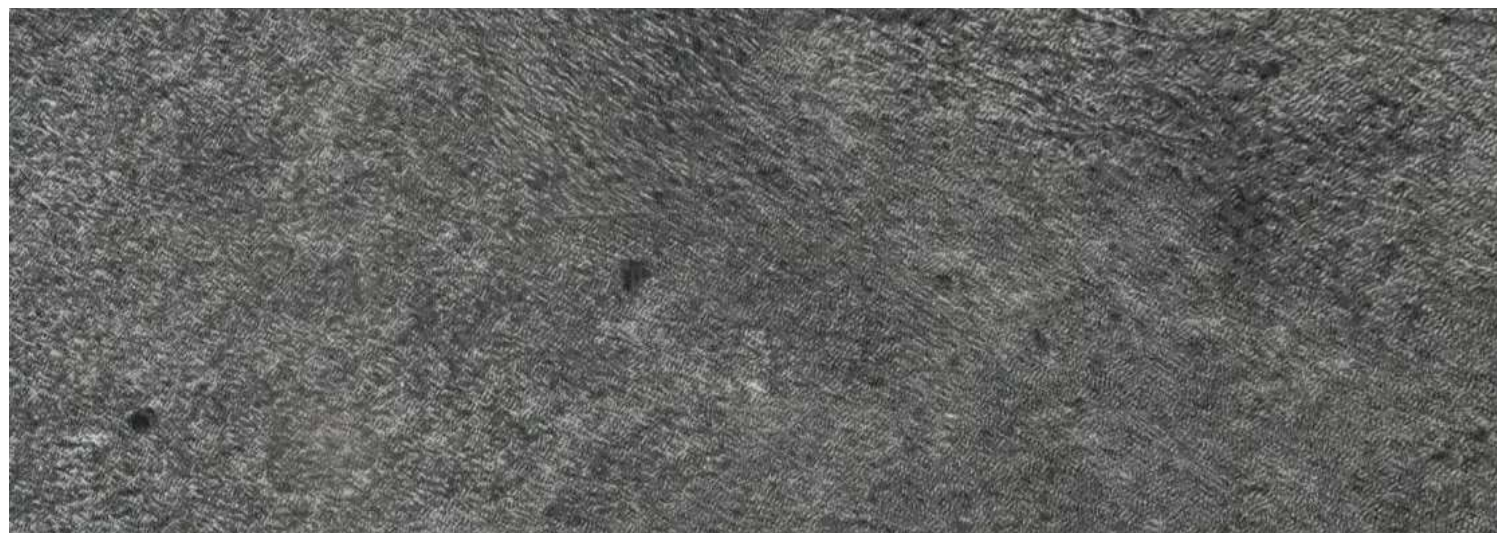
Haedong Yonggungsa, or Haedong Yonggung Temple, is one of the most impressive Buddhist temples in South Korea. It is one of Busan's top temples. It is famous for its picturesque seaside location. Busan's "Temple on the Coast" is also a hot spot for watching the sunrise on the first day of the year.

Get this mesmerizing look with Viva's Jaipur Pink (VA-9019) and Rosa Zarci (VA-9023) that works together to create a magic that would stun the onlookers.

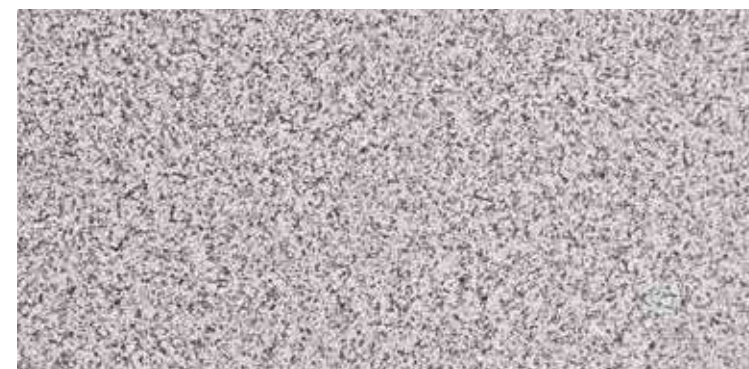




VA 9000
Armani Black



VA 9026
Santos Granito



CHOLATSE

Nepal

Cholatse (also known as Jobo Lhaptshan) is a mountain in the Khumbu region of the Nepalese Himalaya. Nestled between the Khumbu and Gokyo Valleys in Nepal's Everest region, Cholatse is a spectacular peak with steep soaring lines on every aspect. It is one of the more prominent peaks on the approach to the Mt. Everest Basecamp.

Give your architecture a touch of nature with our exclusive Armani Black (VA-9000) and Santos Granito (VA-9026).



VA 9020
Canberra



VA 9004
Versace Brown



THE ACROPOLIS

Greece

The Acropolis of Athens is one of the most famous ancient archaeological sites in the world. Located on a limestone hill high above Athens, Greece. It is made of limestone rock that dates to the Late Cretaceous period when dinosaurs still roamed the earth. It has withstood bombardment, massive earthquakes and vandalism yet still stands as a reminder of the rich history of Greece.

To give your office space the same elegance, choose Canberra (VA-9020) and Versace Brown (VA-9004) and indulge in the greek era.



VA 9005
Ferrari Red



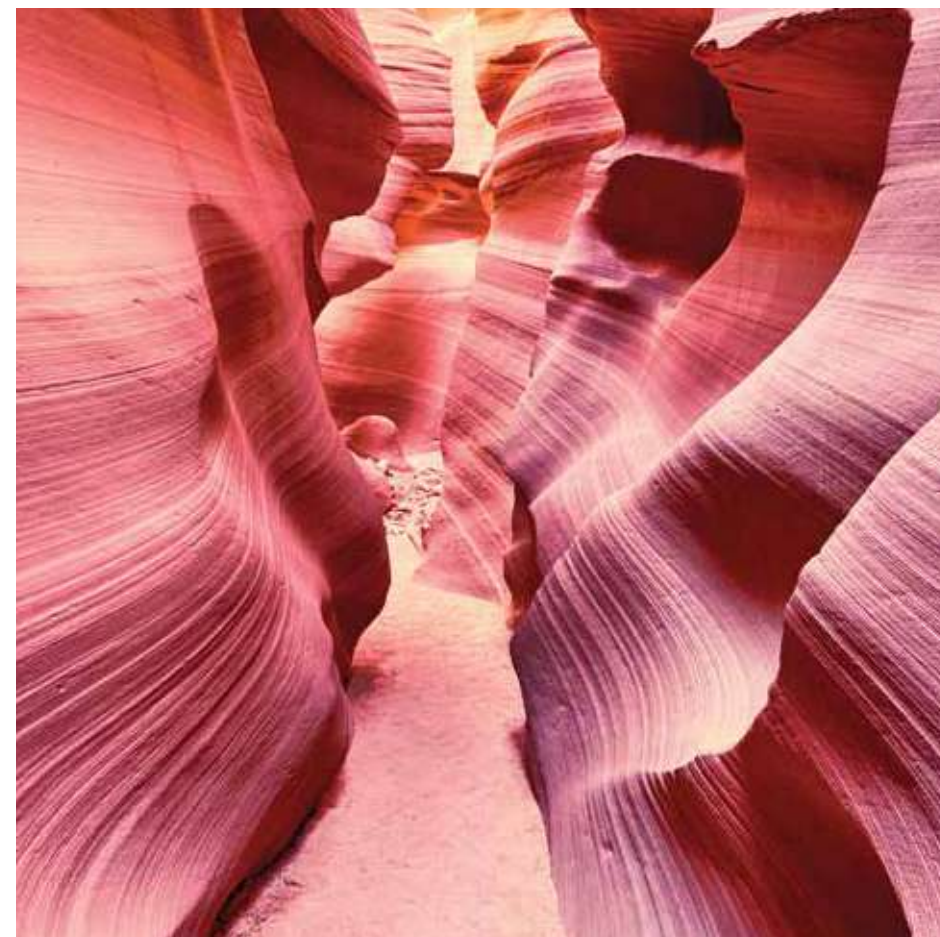
VA 9003
Charminar Red

ANTELOPE CANYON

Arizona

Antelope Canyon is a slot canyon in the American Southwest, on Navajo land east of Page, Arizona. The vibrant shade of the canyon changes at different times of the day, depending on the sunlight it receives. The striking and eye-catching colour of Antelope Canyon is known to inspire creativity and confidence, making it a popular location for photographers and sightseers.

The vibrant shades Ferrari Red (VA-9005) and Charminar Red (VA-9003) give an elegant and majestic charm to the exterior of the building.





VA 9016
Lorro Pretto



VA 9024
Nero Carrera

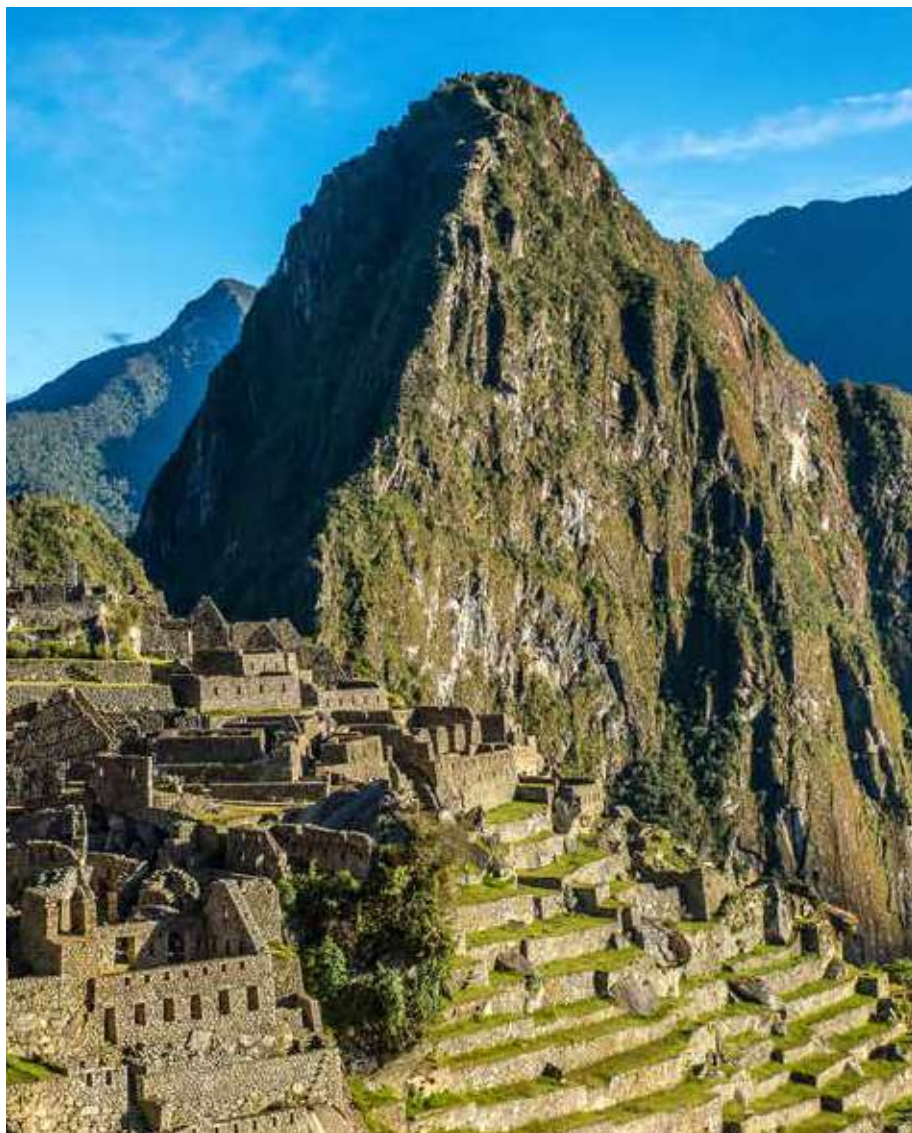
SEORAKSAN

South Korea

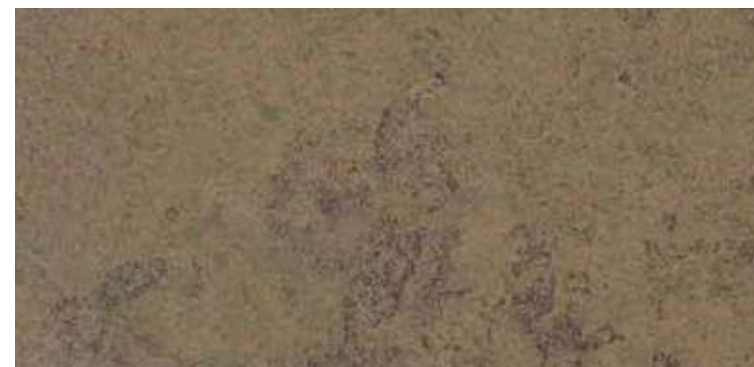
Seoraksan is the highest mountain in the Taebaek mountain range in the Gangwon Province in eastern South Korea. It is located in a national park near the city of Sokcho. Boasting a variety of colorful flowers in spring, refreshing clear water streams in summer, vibrant foliage in fall, and a scenic snow-covered landscape in winter. The Daechongbong Peak of Seoraksan reaches 1,708 meters (5,603 feet).

Our Lorro Pretto (VA-9016) and Nero Carrera (VA-9024) shades are here for you to escape the ordinary and get the feel of nature.





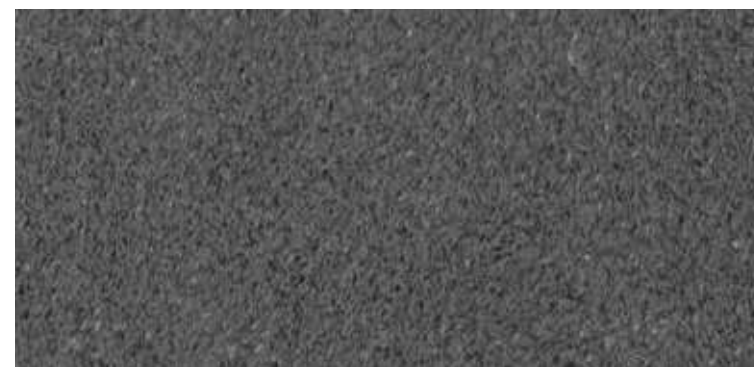
VA 9014
Emerald Green



VA 9015
Brown
Emperador



VA 9013
Burberry Black



MACHU PICCHU

Peru

Machu Picchu is an Incan citadel located in the Eastern Cordillera of southern Peru, on a 2,430-metre mountain ridge above the Sacred Valley. It was built in the classical Inca style, with polished dry-stone walls. Its three primary structures are the Intihuatana, the Temple of the Sun, and the Room of the Three Windows. It is also revered by architects and engineers for its design and its ability to seamlessly blend into the natural landscape.

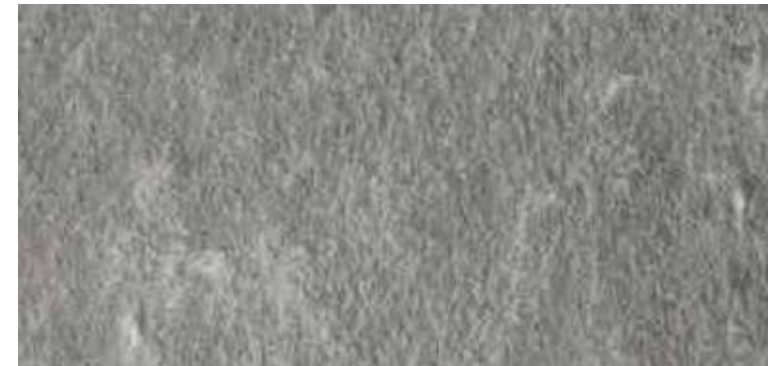
Give your next project a natural stone finish with Emerald Green (VA-9014), Brown Emperador (VA-9015), and Burberry Black (VA-9013) ACP Shades.



VA 9021
Rust



VA 9022
Milan Grey



MOAI

Polynesia

Moai are monolithic human figures carved from volcanic ash by the Rapa Nui people on Easter Island in eastern Polynesia between the years 1250 and 1500. The human figures would be outlined in the rock wall first, then chipped away until only the image was left. The mo'ai are chiefly the living faces of deified ancestors. Almost all mo'ai have overly large heads- three eighths the size of the whole statue.

Our natural shades Rust (VA-9021) and Milan Grey (VA-9022) will give distinctive stone-like finish to your facade.



NFPA 285-2019
EN 13501-1:2018
ASTM D1929-16

Practice the new age **fire safety**
with **VIVA FR ACPs**

Certification by Thomas Bell-Wright International Consultant

TECHNICAL DETAILS

A.	Panel Dimension									
	Standard Size		2440 mm X 1220 mm		3050 mm X 1220 mm		3660 mm X 1220 mm			
B.	Panel Thickness (LDPE/Mineral/Aluminium Corrugated)									
	Panel		Core		Top Skin		Bottom Skin		Alloy	
	3.0 mm		2.4 mm		0.30 mm		0.30 mm		3105	
	4.0 mm		3.4 mm		0.30 mm		0.30 mm		3105	
	4.0 mm		3.0 mm		0.50 mm		0.50 mm		3105 / 5005	
C.	Coating Type									
	Top Skin				Bottom Skin					
	FEVE				PE					
	Permissible Product Tolerance									
D.	Size				Thickness					
	Length	Width	Bow	Squareness	Panel		Coil			
	± 4.0 mm	± 2.0 mm	Maximum 0.5%	Maximum ± 2.0mm	± 0.2 mm		± 0.03 mm			

Property	Test Method	Units	Polyethylene Core	Mineral Core (Class B)	Mineral Core (Class A2)	Aluminium Corrugated Core (Class A2)
ACP Thickness	Measurement	mm	4.0	4.0	4.0	4.0
Coil Thickness	Measurement	mm	0.5	0.5	0.5	0.5
ACP Weight	Measurement	Kg/m2	5.8	7.5	8.0	3.8
Core Density	Measurement	-	1.10	1.6	1.87	2.74
Peel Test	ASTM D 903	N/mm	Min. 8	Min. 8	Min. 8	Min. 8
ACP Tensile Strength	ASTM D 638	Mpa	Min. 40	Min. 40	Min. 45	Min. 45
ACP Yield Strength	ASTM D 638	Mpa	Min. 35	Min. 35	Min. 40	Min. 40
ACP Elongation	ASTM D 638	%	Min. 5	Min. 5	Min. 5	Min. 5
Thermal Expansion	ASTM D 696	mm/M/100°C	2.4	2.4	2.4	2.4
Heat Transmission Coefficient (U)	ASTM C 1363	W/m²K	5.52	5.53	5.53	5.53
Fire Classification	EN 13501-1	-	-	Class B-s1-d0	Class A2-s1- d0	Class A2-s1- d0
Fire Rating	DIN 4102	-	-	Class B1	Class A2	Class A2
Sound Transmission Loss	ASTM E 90	dB	25	25	25	25
Sound Absorption Factor	ISO 354	-	0.05	0.05	0.05	0.05

* For 0.50 mm coil thickness, MOQ for Natural Stone Series will be 200 sq.mt

*Viva warrants that its products are free from manufacturing defects and they are fit and suitable for usual purpose. The product should be inspected prior to installation and our liability will be limited to the cost of product only.



Largest Manufacturer of ACP in INDIA

Head Office:

Viva Composite Panel Pvt. Ltd., 601, 6th Floor, A-Wing, Times Square Building, Marol Naka, Andheri - Kurla Rd, Andheri East, Mumbai, Maharashtra - 400059

Factory Address:

Survey No. 85/8, 85/9, 85/10, 68/1, 70/14

At Post: Khattalwada, Manekpur Road, Opp. Poultry Farm, Near Apar Industries Ltd., Tal-Umbergaon, Dist - Valsad, Station-Sanjan, Gujarat - 396120

Branch Offices:

Bangalore

Survey No. 71/1 Volegarahalli, Kengeri Hobli Mysore Road, Bangalore 560060

Chennai

44 & 45, Kavery Nagar, Madhiravedu, Chennai, Tamil Nadu – 600077

Hubli & Goa

Block No.47, Shakti Concrete Blocks and Poles, Hubli, Karnataka-580030

Indore

Indreshwar Marg, House No.9/1, Macchi Bazar, Near Harsiddhi, Indore Madhya Pradesh – 452007

Kochi

34/1242 A, Beena Anjumana Road, Edappally, Kochi, Kerala – 682024

Lucknow

Plot No 69, Mill Road, Aishbagh, Lucknow, Uttar Pradesh – 226004

Ranchi

Plot No-568, Golden Camp, Old H.B. Road, Kokar, Ranchi, Jharkhand-834001

Udaipur

Bhuwana main road, Near Bypass Circle, Udaipur, Rajasthan – 313001

Bhubaneswar

Plot No. 225, Cuttack Road, Near Sunshine Hospital, Mahadev Saw Mill Campus, Laxmisagar Chhacker, Bhubaneswar-751006

Ahmedabad

Godown No-6, Opp.Vizag Steel, Bharti Ashram Lane, Sarkhej Dholka Road, Sarkhej, Ahmedabad-382210 (Gujarat)

Surat

44,45,46, Sattarawadi Industrial Society, City Center Building, Sosyo Circle, Udhna Magdalla Road, Surat, Gujarat-395002

Delhi

A-13, 1st Floor, Rajouri Garden, Near Rajouri Garden, Metro Station, New Delhi-110027

Raipur

M.M. Patel Saw Mill, New Timber Market, Fafadih, Raipur, Chhattisgarh-492001

Jaipur

B-9, Sudarshanpura Industrial Area, 22 Godam, Jaipur, Rajasthan-302006

Hyderabad

H No 5-5-1035 & 36 Siddhi Vinayaka Colony, Darussalam, Indore Hyderabad, Telangana – 500012

Bhiwandi

C-16, Shree Arihant Complex, Reti Bunder Road, Kalher Village, Bhiwandi, Thane, Maharashtra-421302

Choose **Viva's Rain-Screen System** For Better Moisture Management And High Energy Efficiency



Advantages of VIVA Rainscreen Systems

- Low Maintenance
- Gravity Defying Designs
- Better Accessibility To Services
- Cost Effective
- Improved Air Ventilation
- Sustainability
- Improved Aesthetics



Follow vivaacps at



info@vivaacp.com
vivaacp.com
18003133770 (Toll Free)